

A photograph of a hallway with a checkered floor and a chandelier. The hallway is brightly lit, and the floor is highly reflective. The walls are light-colored, and there are several doorways along the hallway. A large chandelier hangs from the ceiling, casting a warm glow. The overall atmosphere is clean, modern, and well-maintained.

# The Warmth of **POLARIS**<sup>®</sup>

**High-Efficiency Space and  
Water Heating**

# Why Homeowners Choose POLARIS®

“Our Polaris® heating system has been a great investment providing us comfortable yet economical heat over the past ten years, while also supplying all our hot water needs.”

– Mr. and Mrs. Phil McAfee  
Chattanooga, TN



## The Best Choice for Hot Water

Polaris® is ideal for large homes. For dish-washing, showers, baths, clothes washing, or hot tubs, Polaris® is the best choice. Polaris® models heat up to 255 gallons per hour (GPH) at a 90°F temperature rise, compared to 41 GPH for standard gas water heaters.



# The **POLARIS**<sup>®</sup> *Advantage*

## **Water Heating\***

**Provides up to 382 GPH of Hot Water ...  
Enough Hot Water to Run Two Showers Forever!**

## **Space Heating\*\***

**Provides up to 191,000 BTUs/Hr for Space Heating ...  
Enough Heat for a 3,820 Sq. Ft. Home!**

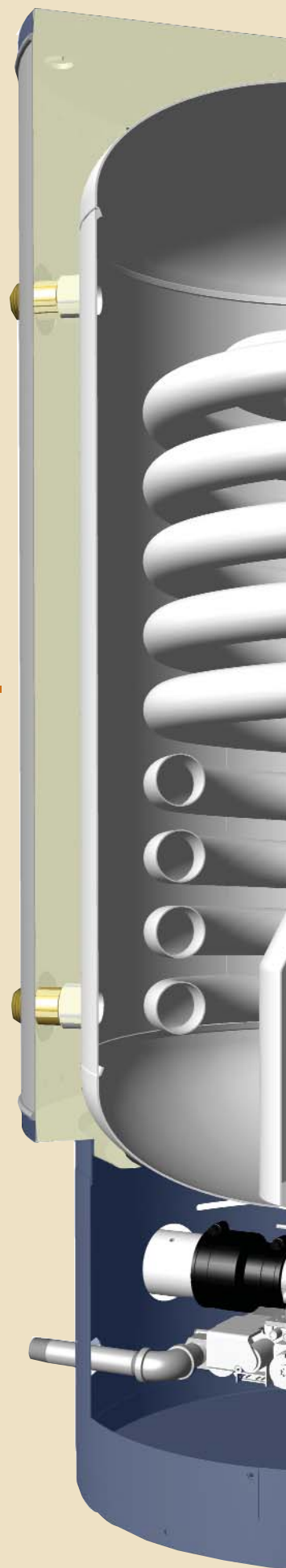
## **Combined Space and Water Heating\*\*\***

**Provides up to 60 GPH of Hot Water  
and up to 146,000 BTUs/Hr for Space Heating ...  
Enough Water for 4 Showers/Hr.  
and Enough Heat for a 2,920 Sq. Ft. Home!**

\*Assumes 105°F Shower Temperature, 45°F inlet water temperature, and 3 GPM shower flow rate.

\*\*Assumes 50 BTUs/Sq. Ft. maximum heat loss. Heat load requirements in actual application must be calculated according to industry-accepted standards, such as "Manual J" method. Do not attempt to use Polaris® water heaters for space heating without determining appropriate heat load requirements.

\*\*\*Assumes 105°F Shower Temperature, 45°F inlet water temperature, and 3 GPM shower flow rate. Assumes 50 BTUs/Sq. Ft. maximum heat loss. Heat load requirements in actual application must be calculated according to industry-accepted standards, such as "Manual J" method. Do not attempt to use Polaris® water heaters for space heating without determining appropriate heat load requirements.





# 95+0%

# EFFICIENT

- **Up to 100-Gallon Capacity with 199 MBtu Input**
- **Stainless Steel Tank**
- **Vents with PVC, CPVC, or ABS Pipe**
- **CSA, NSF, CEC and Low NOx Approved**

This water heater design has been tested by CSA International and complies with ANSI Z21.10.1, Section 2.35 Flammable Vapor Resistance



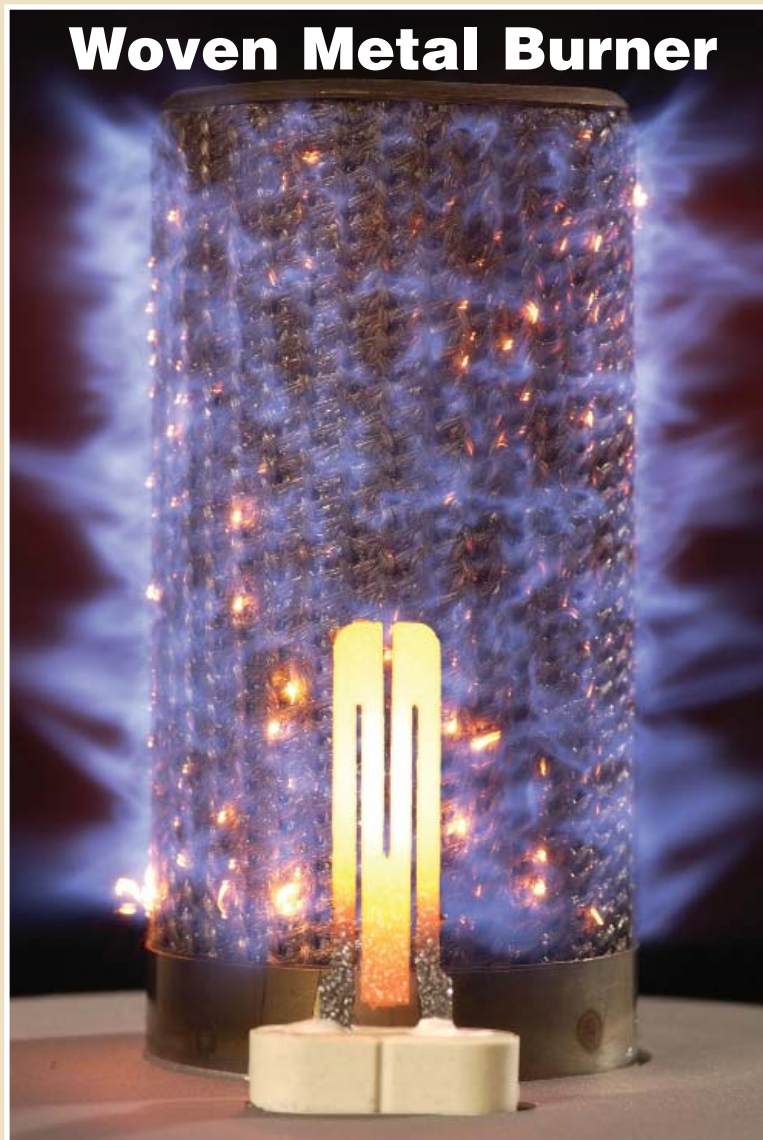
# The Quiet and Efficient Choice for Space and Water Heating

## Whisper Quiet Operation

The woven metal burner provides even heat distribution through uniform combustion, and is resistant to thermal and mechanical shocks, produces low NOx emissions, and protects from flashback. An ultra quiet blower is combined with a submerged combustion system for whisper quiet operation. A high capacity, quiet, brushless, DC motor is combined with an integrated gas/air control system resulting in excellent combustion with flexible venting options.

## Easy to Install and Service

All gas adjustments are factory preset, no field adjustments required. Connect water, gas, venting, electricity and condensate drain. After filling the tank with water, turn on the gas and electricity, set the temperature and walk away. Indicator lights illuminate when the power is on and when the igniter and burner are operating. A self-diagnostic control automatically monitors all critical water heater functions and indicates the status of each using a flash code sequence.



## Residential Polaris® 10-Year Tank, 1-Year Parts Warranty

MODEL NUMBER	TANK CAP. (GAL.)	INPUT BTU PER HOUR	G.P.H. REC. 90° RISE	VENT DIA.	EXTERIOR HEIGHT
PG10 34-100-2NV	34	100,000	129	2 or 3	48-1/2
PG10 34-150-2NV	34	150,000	188	2 or 3	48-1/2
PG10 50-130-2NV	50	130,000	166	2 or 3	62-1/2
PG10 50-175-3NV	50	175,000	224	3	63-3/4
PG10 50-199-3NV	50	199,000	255	3	63-3/4
PG10 100-199-3NV	100	199,000	230	3	70

For propane, substitute "P" for "N" in the model number. Dimensions on all charts shown in inches.

# Polaris Combines Space Heating with Water Heating



## Forced Air Hydronic Heat

Polaris® is used to combine an air handler for comfortable forced air hydronic space heating with potable hot water. Hot water is circulated through a coil in the air handler. Air from the home is warmed as it is blown across the coil. Warmed air is returned to the home through air ducts. With up to 199,000 BTUs, Polaris® can heat most homes, large or small.

## Radiant Hydronic Heat

Polaris® works great for homeowners who prefer radiant hydronic heat. With radiant floor hydronic systems, potable hot water is circulated through tubes under the floor. The floor absorbs heat from the tubes and radiates it into the room.

With radiant baseboard heat, potable hot water is circulated through finned tube baseboard. Heat rises from the baseboard heaters, warming the home.

NOTE: All water components must be approved for use with potable water.



Illustration provided by Uponor Wirsbo



### Order Entry and Sales

P.O. Box 4056, 500 Princeton Road • Johnson City, TN 37602-4056  
(800) 937-1037 • fax (800) 581-7224  
RPOL - 1/05

### Product Service and Support

P.O. Box 1597, 500 Princeton Road • Johnson City, TN 37605-1597  
(800) 456-9805 • fax (800) 999-5210