

3-Year Limited Tank/1-Year Limited Parts Warranty*

Heavy Duty Ultra-Low NOx Commercial Gas Tank-Type Water Heaters

Features

82% thermal efficiency affords lower operating costs

Fan Assisted Combustion

- The blower is built into the Low NOx burner assembly for Ultra-Low NOx readings that comply with SCQAMD rule 1146.2 of 14 ng/j or 20 ppm

Metal Venting

- Rated Category I Appliance. Uses standard double wall type "B" vent
- Can be commonly vented with other Category I appliances
- Vent connects directly to the vent connector outlet
- No Draft hood or barometric damper required
- Perfect choice for retrofit and upgrade installations

Water Connections

- For ease of installation, all BCL3s feature water connections on the top, front, and rear
- Self Cleaning inlet water connection eliminates harmful scale buildup, extending the life of the product
- The front inlet connection must be used for the Self Cleaning benefits

Glasslined Tank

- Our proprietary slush coating is applied after the complete tank has been assembled to give a seamless barrier against hot water corrosion
- Maximum working pressure 160 psi

Installed Cost Savings

- When multiple BCL3 units are exclusively used in a vent manifold, use the National Fuel Gas Code Table 13 Fan Sizing Charts to determine vent diameter and specifications
- The BCL3 uses a smaller vent diameter than a natural draft water heater which saves on installation cost

Fully Automatic Digital Control with Safety Shutoff

- Accurate, dependable control system. Features a two speed blower control for smooth main burner light off
- Manual reset gas shutoff device for added safety
- Maximum inlet gas pressure is 14" W.C. Minimum gas pressure is 3.5" W.C. Natural Gas

Foam Insulation

- Saves fuel, helps reduce standby heat loss

Jacket

- Heavy gauge steel finished with a baked enamel finish over a bonderized undercoat

Easy Cleaning

- Handhole cleanout allows access for easy cleaning

Fully Tested for Safety and Performance

- Design certified by the Underwriters Laboratory for 180°F hot water service
- Meets rigid requirements of the National Sanitation Foundation when equipped with optional leg kit
- Certified for use on combustible flooring

Intermittent Ignition Device

- Eliminates standing pilot
- Provides flame failure response in less than one second
- Spark ignitor and power ON/OFF switch

Easy-To-Install

- Completely factory-assembled
- Only gas, water, vent and electric connections need be made
- Provided with drain valve

Anodes

- Long-life, stainless steel core anode rods

Plug Kits

- Pipe nipples and caps are included to plug unused water connections

Approval Ratings and Certification

- All models meet ANSI Z21.10.3 - CSA 4.3 standards and the thermal efficiency and standby loss requirements of the U. S. Department of Energy and current edition of ASHRAE/IESNA 90.1

Other Features

- Integral automatic gas shutoff system prevents excessive water temperature
- CSA Certified and ASME Rated T&P Relief valve are factory-installed
- Maximum working pressure is 160 psi standard
- Adjustable thermostat with a 120-180°F range

NSF Leg Kit

- Meets NSF Standard 5 with optional leg kit - Part # 9008214005



GAS-FIRED



Low Lead Content



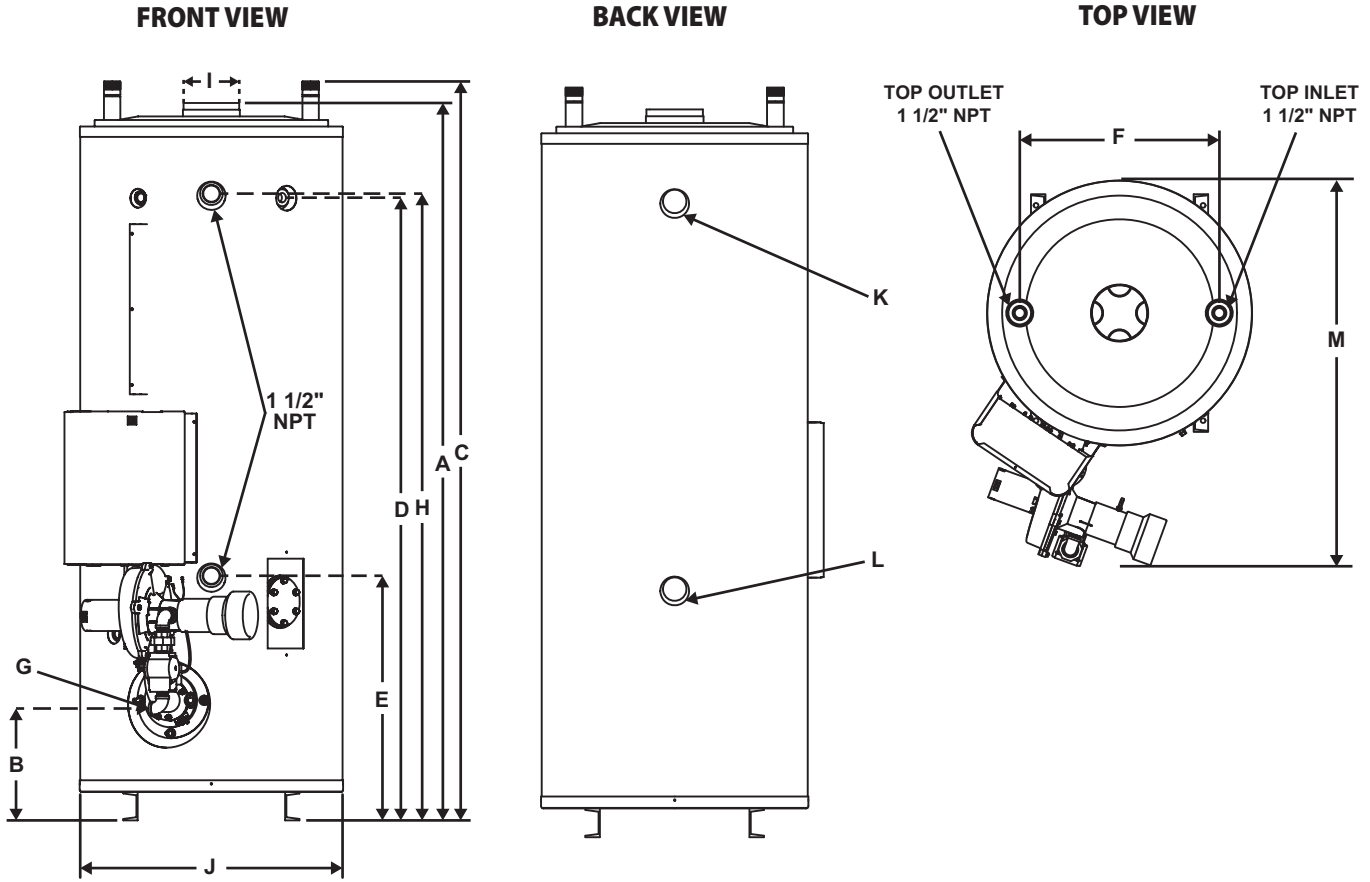
WATER QUALITY



*For complete warranty information consult the written warranty of American Water Heaters found at www.americanwaterheater.com, or call (800) 456-9805.

ROUGH-IN DIMENSIONS

BCL3 Models 199-400



ROUGH-IN DIMENSIONS

	BCL3-95T199-6NOX		BCL3-85T275-6NOX / ABCL3-85T275-6NOX		BCL3-85T390-6NOX / ABCL3-85T390-6NOX	
	INCHES	CM	INCHES	CM	INCHES	CM
A	76	193.0	76	193.0	76	193.0
B	11 3/4	29.8	11 3/4	29.8	11 3/4	29.8
C	78 1/4	198.8	78 1/4	98.8	78 1/4	198.8
D	65 3/4	167.0	65 3/4	167.0	65 3/4	167.0
E	25 3/4	65.4	25 3/4	65.4	25 3/4	65.4
F	21	53.3	21	53.3	21	53.3
G	3/4 NPT		3/4 NPT		3/4 NPT	
H	66 1/4	168.3	66 1/4	168.3	66 1/4	168.3
I	6	15.2	6	15.2	6	15.2
J	27 3/4	70.5	27 3/4	70.5	27 3/4	70.5
K	1 1/2 NPT		1 1/2 NPT		1 1/2 NPT	
L	1 1/2 NPT		1 1/2 NPT		1 1/2 NPT	
M	41	104	41	104	41	104

ASME models are prefixed with an "A" Example: **ABCL3-85T275-6NOX**

Dimensions and specifications subject to change without notice in accordance with our policy of continuous product improvement.

*Models rated at 82% thermal efficiency

Models available for sale in California only

RECOVERY CAPACITIES, BASED ON 82% EFFICIENCY

	INPUT BTUH	INPUT kW	U.S. GAL.	LITERS	EFF. %	U. S. GALLONS / HR. AND LITERS / HR. AT TEMPERATURE RISE INDICATED																
						Deg. F	36	40	50	54	60	70	72	80	90	100	108	110	120	126	130	140
						Deg. C	20	22	28	30	33	39	40	44	50	56	60	61	67	70	72	78
BCL3-95T199-6NOX	199000		93		82	GPH	545	491	393	364	327	280	273	245	218	196	182	178	164	156	151	140
		58		352		LPH	2064	1858	1486	1376	1239	1062	1032	929	826	743	688	676	619	590	572	531
BCL3-85T275-6NOX / ABCL3-85T275-6NOX	275000		85		82	GPH	754	678	543	502	452	388	377	339	301	271	251	247	226	215	209	194
		81		322		LPH	2853	2567	2054	1902	1712	1467	1426	1284	1141	1027	951	934	856	815	790	734
BCL3-85T390-6NOX / ABCL3-85T390-6NOX	390000		85		82	GPH	1069	962	769	712	641	550	534	481	427	385	350	321	305	296	275	
		114		322		LPH	4046	3641	2913	2697	2427	2081	2023	1820	1618	1456	1349	1324	1214	1156	1120	1040

GAS AND ELECTRICAL CHARACTERISTICS

MODEL	GAS TYPE	GAS SUPPLY PRESSURE		VOLTS / HZ	AMPERES
		MINIMUM	MAXIMUM		
All Models	Natural	3.5" W.C. (0.87 kPa)	14" W.C. (3.48 kPa)	120 / 60	< 5



Commercial Gas Water Heaters

MODEL	CLEARANCE TO COMBUSTIBLES		CLEARANCE TO NON-COMBUSTIBLES	
	SIDES & REAR	TOP COVER	SIDES & REAR	TOP COVER
BCL3-95T199-6NOX	0"	12"	0"	12"
BCL3-85T275-6NOX / ABCL3-85T275-6NOX	0"	12"	0"	12"
BCL3-85T390-6NOX / ABCL3-85T390-6NOX	0"	12"	0"	12"

MODELS	WATER CONNECTIONS IN INCHES					
	INLET			OUTLET		
	TOP	FRONT	BACK	TOP	FRONT	BACK
BCL3-95T199-6NOX	1 1/2	1 1/2	1 1/2	1 1/2	1 1/2	1 1/2
BCL3-85T275-6NOX / ABCL3-85T275-6NOX	1 1/2	1 1/2	1 1/2	1 1/2	1 1/2	1 1/2
BCL3-85T390-6NOX / ABCL3-85T390-6NOX	1 1/2	1 1/2	1 1/2	1 1/2	1 1/2	1 1/2

	BCL3-95T199-6NOX		BCL3-85T275-6NOX / ABCL3-85T275-6NOX		BCL3-85T390-6NOX / ABCL3-85T390-6NOX	
Approx. Shipping Weight STD	790 lbs.	358 kg.	850 lbs.	386 kg.	850 lbs.	386 kg.
Approx. Shipping Weight ASME	-	-	900 lbs.	408 kg.	900 lbs.	408 kg.

Specification

Water Heater(s) shall be Model _____ as manufactured by AMERICAN, or equal. Water heater(s) shall be of glasslined design, and gasfired, equipped to burn natural gas and design certified by the Underwriter Laboratory under Volume III tests for commercial heaters for delivery of 180°F water, and meet or exceed the thermal efficiency and standby loss requirements of the U.S. Department of Energy and Current Edition of ASHRAE/IESNA 90.1. Heaters shall have an input rating of _____ and a recovery rating of _____ GPH at a temperature rise of 100°F with a storage capacity of _____ gallons. Heaters shall be equipped with 1 1/2" water inlet and outlet openings, a 2 3/4" x 3 3/4" boiler-type handhole cleanout and shall have a maximum working pressure of 160 psi. Water heater(s) shall be equipped with an integrated control system consisting of a 180°F adjustable thermostat with upper and lower sensing bulbs, which average the water temperatures at the top and bottom of the tank for maximum water temperature control. Heater(s) shall be provided with a manual reset gas shutoff device, anodes for cathodic protection and IID system. CSA Certified and ASME Rated T&P Relief Valve shall be furnished and installed by the factory. The heater shall be insulated with foam insulation or equal. The outer jacket shall have a baked enamel finish over a bonderized undercoating. All internal surfaces of the heater(s) exposed to water shall be glasslined with an alkaline borosilicate composition that has been fused-to-steel by firing at a temperature range of 1400° to 1600°F. Heater tank shall have a 3 year limited warranty against corrosion or sediment buildup as outlined in the written warranty. Fully illustrated instruction manual to be included.

Distributed By:

Order Entry and Sales

500 Princeton Road (FEDEX, UPS)
 Johnson City, TN 37601-2030
 P.O. Box 4808 (Mailing)
 Johnson City, TN 37602-4808
 (800) 937-1037
 FAX (800) 581-7224

Warranty and Service

500 Princeton Road (FEDEX, UPS)
 Johnson City, TN 37601-2030
 P.O. Box 1597 (Mailing)
 Johnson City, TN 37605-1597
 (800) 456-9805
 FAX (800) 999-5210

NCGSS00812