

## POLARIS™ HIGH EFFICIENCY

### CONDENSING DESIGN

- Operates at up to 96% thermal efficiency which saves money on operating costs compared to a standard 80% efficient gas water heater.
- Helical internal heat exchanger keeps hot combustion gases in the tank longer to extract more heat into the water.

### STAINLESS STEEL CONSTRUCTION

- Tank and helical heat exchanger are constructed from 444 stainless steel for excellent corrosion resistance without the need for an anode.

### WHISPER QUIET OPERATION

- Ultra quiet blower and burner to minimize noise.

### POWER DIRECT VENT DESIGN

- Direct vent using PVC, CPVC or Polypropylene (solid core only) through a sidewall or roof.
- Optional concentric vent kit.
- 2" pipe vents up to 52 equivalent feet (100-150k BTU/hr inputs)
- 3" pipe vents up to 130 equivalent feet

### ADVANCED ELECTRONIC CONTROL

- Large touchscreen display
- Precise temperature control
- Advanced water heater status and diagnostics

### FULLY SERVICEABLE FROM THE FRONT

- Two front access panels expose all serviceable components. Modular components are all easily removed.

### ULTRA-LOW NOX MODULATING GAS BURNER

- Enhanced Ultra-low NOx burner complies with SCAQMD Rule 1146.2 and other Air Quality Management Districts with similar requirements for NOx emissions of less than 14 ng/j.
- Modulating burner maintains high efficiency operation at lower input rates.

### SIDE-MOUNTED HOT AND COLD RECIRCULATING TAPS

- Polaris can be easily installed with a recirculation system or as part of a combined domestic & space heating system.

### AVAILABLE IN NATURAL GAS OR PROPANE

### CSA CERTIFIED AND ASME RATED T&P RELIEF VALVE

### STANDARDS AND CERTIFICATIONS

- Design-certified by CSA International according to ANSI Z21.10.3 – CSA 4.3 Standards.
- Meets UBC, CEC, and ICC National Codes.
- Meets the thermal efficiency and standby loss requirements of the U. S. Department of Energy and current edition of ASHRAE/IES 90.1.

### 3-YEAR LIMITED TANK AND 1-YEAR PARTS WARRANTY

- For complete information, consult written warranty or go to [americanwaterheater.com](http://americanwaterheater.com).

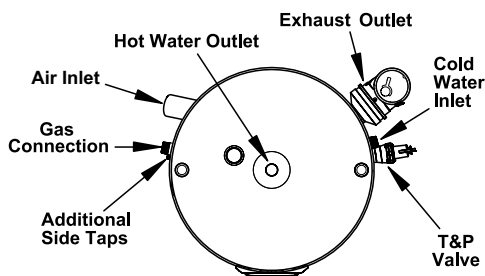




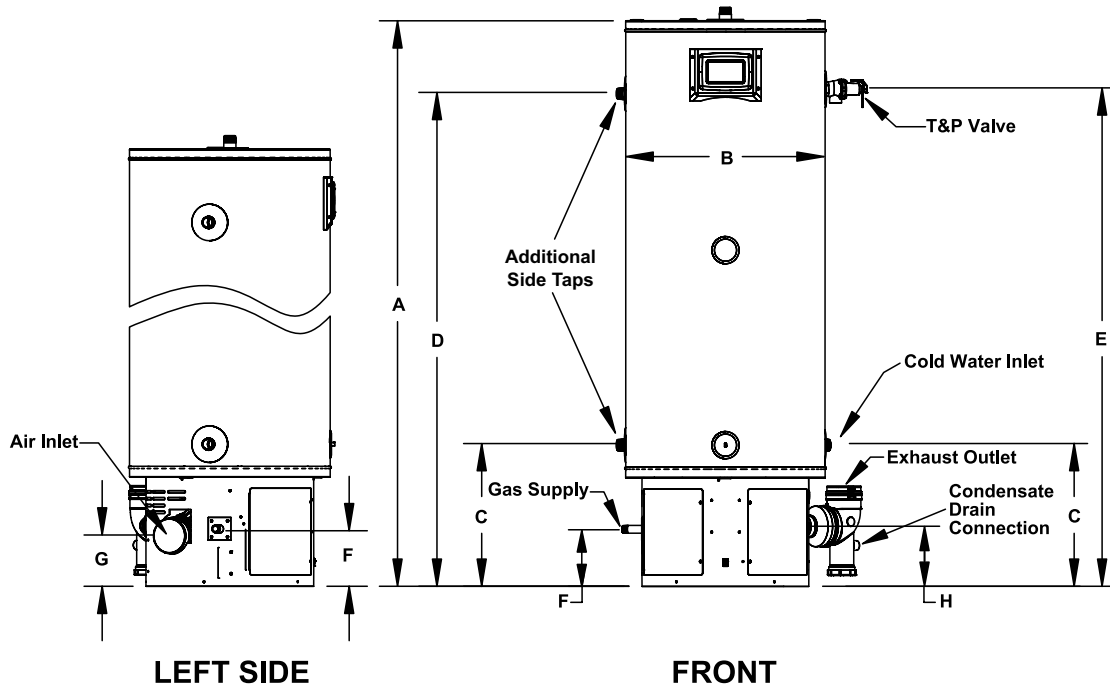
# Commercial Gas Water Heater

Model Number	Gallon Capacity	BTU/h Input Gallon Per Hour	Thermal Efficiency	Recovery @ 90° Rise Gallon Per Hour	Dimensions in Inches		Vent Connection	1" Water Connections		T&P	Gas Supply*	Approx. Shipping Weight (lbs)
					A	B		C	D	E	F	
PGC3 34 130 2NV	34	130,000	96%	165	48-1/2	22	2 or 3	15-3/4	40-1/2	41	6-3/8	150
PGC3 34 150 2NV	34	150,000	94%	190	48-1/2	22	2 or 3	15-3/4	40-1/2	41	6-3/8	150
PGC3 50 130 2NV	50	130,000	95%	165	62-3/8	22	2 or 3	15-3/4	54-1/2	55	6-3/8	176
PGC3 50 150 2NV	50	150,000	95%	190	63-3/4	22	2 or 3	15-3/4	55-3/4	56-1/4	6-3/8	180
PGC3 50 175 3NV	50	175,000	96%	222	63-3/4	22	3	15-3/4	55-3/4	56-1/4	6-3/8	180
PGC3 50 199 3NV	50	199,000	96%	253	63-3/4	22	3	15-3/4	55-3/4	56-1/4	6-3/8	180

\*For propane models change "N" to "P" in the model number (example: PGC3 50 199 3PV)  
Models certified for sea level to 7,700 ft. elevation.



**Top Outlet: 1" NPT**  
**Side Inlet: 1" NPT**  
**Side Taps: 1" NPT**  
**Condensate Drain Outlet: 1/2" NPT**



## SUGGESTED SPECIFICATION

(Natural or Propane) gas water heater(s) shall be American Polaris model with storage capacity \_\_\_\_\_ and input rating of \_\_\_\_\_ BTUs per hour. Water heater(s) shall have: 1: Tank constructed of 444 stainless steel with submerged combustion chamber. 2: Advanced electronic control w/ LCD display and actual diagnostics. 3: A 3-year limited warranty against tank leaks. Water heater(s) shall meet the thermal efficiency and standby loss requirements of the U.S. Department of Energy and current edition of ASHRAE/IES 90.1 and be design certified by CSA International according to ANSI Z21.10.3-CSA 4.3 standards governing storage tank water heaters.

For technical information call (800) 999-9515. American Water Heaters reserves the right to make product changes or improvements without prior notice.