

**3-Year Limited Tank/ 1-Year Limited Parts Warranty\***

## Eighty plus percent thermal efficiency affords lower operating costs on most models.

- **Induced Draft Built-In Blower**

The blower is built into the top cover, factory mounted and wired. Ideal for installations where negative pressure is present in the building. Blower proves draft prior to ignition. No drafthood or barometric damper required.

- **Metal Venting**

Uses standard metal single wall or double wall type "B" vent. Can be commonly vented with Category I appliances. Vent connects directly to the blower outlet. Perfect choice for retrofit and upgrade installations.

- **Water Connections**

For ease of installation, all BCG3-NOx feature water connections on the top, front, and rear.

- **Glasslined Tank**

Our proprietary slush coating is applied after the complete tank has been assembled to give a seamless barrier against hot water corrosion. Maximum working pressure 160 psi.

- **Installed Cost Savings**

When multiple BCG3-NOx units are exclusively used in a vent manifold, use the National Fuel Gas Code Table 13 Fan Sizing Charts to determine vent diameter and specifications. The BCG3-NOx with its internal induced draft blower enables safe use of smaller vent diameters. This feature can save hundreds of dollars in installation costs.

- **Fully Automatic Digital Controls With Safety Shutoff**

Accurate, dependable control system. Manual reset gas shutoff device for added safety. Maximum inlet gas pressure is 14" W.C. Minimum gas pressure is 5.2" W.C. Natural Gas, 11" W.C. Propane.

- **"Environmentally-Friendly" Non-CFC Foam Insulation**

Saves fuel, helps reduce standby heat loss.

- **Jacket**

Heavy gauge steel finished with a baked enamel finish over a bonderized undercoat.

- **Fully Tested for Safety and Performance**

Design certified by the Underwriters Laboratory for 180°F hot water service. Meets rigid requirements of the National Sanitation Foundation Standard 5 when equipped with optional leg kit. Certified for use on combustible flooring.

- **Easy Cleaning**

Handhole cleanout allows access for easy cleaning.

- **Anodes**

Long-life, stainless steel core anode rods.

- **Intermittent Ignition Device**

Eliminates standing pilot. Provides flame failure response in less than one second. Power ON/OFF switch.

- **Easy-to-Install**

Completely factory-assembled. Only gas, water, vent and electric connections need be made. Provided with drain valve.

- **Plug Kits**

Pipe nipples and caps are included to plug unused water connections.

- **Approval Ratings and Certification**

All models meet or exceed the thermal efficiency and standby loss requirements of the U. S. Department of Energy and current edition ASHRAE/IESNA 90.1, C.E.C. California Energy Commission and comply with Texas requirements for Low NOx emissions.

### OTHER FEATURES

- Equipped with gas pressure regulator and pilot filter
- Integral automatic gas shutoff system prevents excessive water temperature
- CSA certified and ASME rated T&P relief valve
- Maximum working pressure is 160 psi standard
- Cathodic protection
- Adjustable thermostat with a 120-180°F range.

### OPTIONS

- Manifold kits for multiple heater installations.  
two units - #9003426205  
three units - #9003427205  
four units - #9003428205
- Leg kits for UL sanitation to meet NSF-5 - # 9003425205

- **THREE YEAR LIMITED TANK WARRANTY**

For complete warranty information, consult written warranty or contact American Water Heaters.



GAS-FIRED



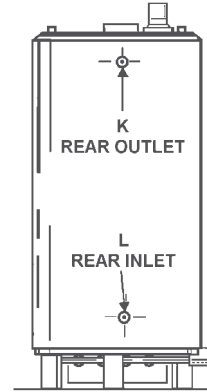
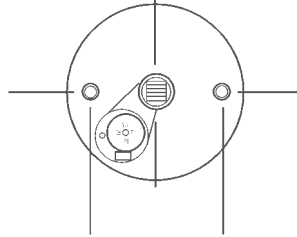
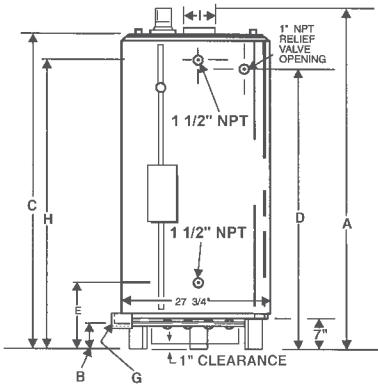
HLW  
On Select Models.



\*For complete warranty information consult the written warranty of American Water Heaters found at [www.americanwaterheater.com](http://www.americanwaterheater.com), or call (800) 456-9805.



# Low NOx Heavy-Duty Commercial Gas



| MODEL NUMBER                  | GAL. CAP. | BTU INPUT NATURAL | RECOVERY RATES |       |       | A  | HGT. TO GAS CONN B | C      | D      | HGT. TO FRT/BACK COLD E | CONN. SPREAD F | SIZE OF GAS CONN. G | HGT TO FRT/BACK HOT H | VENT SIZE I | TANK DIAMETER | APPROX. SHIP. WEIGHT STD | APPROX. SHIP. WEIGHT ASME |
|-------------------------------|-----------|-------------------|----------------|-------|-------|----|--------------------|--------|--------|-------------------------|----------------|---------------------|-----------------------|-------------|---------------|--------------------------|---------------------------|
|                               |           |                   | 40°F           | 100°F | 140°F |    |                    |        |        |                         |                |                     |                       |             |               |                          |                           |
| BCG3-70T120-5NOX <sup>+</sup> | 71        | 120,000           | 288            | 115   | 82    | 63 | 4-1/4              | 59-1/2 | 50-7/8 | 20-1/2                  | 19             | 3/4                 | 51-7/8                | 6           | 27-3/4        | 520                      | ~                         |
| BCG3-80T150-6NOX              | 81        | 154,000           | 369            | 148   | 106   | 68 | 4-1/2              | 62     | 53-5/8 | 20-1/2                  | 21             | 3/4                 | 54-7/8                | 6           | 27-3/4        | 550                      | ~                         |
| BCG3-100T180-6NOX             | 100       | 180,000           | 432            | 173   | 123   | 72 | 4-1/2              | 70     | 61-5/8 | 20-1/2                  | 21             | 3/4                 | 61                    | 6           | 27-3/4        | 550                      | ~                         |
| BCG3-95T199-6NOX*             | 93        | 199,000           | 477            | 191   | 136   | 72 | 4-1/2              | 70     | 61-5/8 | 20-1/2                  | 21             | 3/4                 | 61                    | 6           | 27-3/4        | 620                      | ~                         |
| BCG3-100T199-6NOX             | 100       | 199,000           | 477            | 191   | 136   | 72 | 4-1/2              | 70     | 61-5/8 | 20-1/2                  | 21             | 3/4                 | 61                    | 6           | 27-3/4        | 550                      | ~                         |
| BCG3-100T200-6NOX             | 100       | 199,000           | 477            | 191   | 136   | 72 | 4-1/2              | 70     | 61-5/8 | 20-1/2                  | 21             | 3/4                 | 61                    | 6           | 27-3/4        | 660                      | 710                       |
| BCG3-100T250-6NOX             | 100       | 250,000           | 600            | 240   | 171   | 72 | 4-1/2              | 70     | 61-5/8 | 20-1/2                  | 21             | 3/4                 | 61                    | 6           | 27-3/4        | 660                      | 710                       |
| BCG3-100T275-6NOX             | 100       | 275,000           | 659            | 264   | 188   | 72 | 4-1/2              | 70     | 61-5/8 | 20-1/2                  | 21             | 3/4                 | 61                    | 6           | 27-3/4        | 660                      | 710                       |
| BCG3-85T310-6NOX*             | 85        | 310,000           | 743            | 297   | 212   | 73 | 4-1/2              | 72     | 62-1/2 | 20-1/2                  | 21             | 3/4                 | 63                    | 6           | 27-3/4        | 720                      | 770                       |
| BCG3-85T366-6NOX              | 85        | 366,000           | 878            | 351   | 251   | 73 | 4-1/2              | 72     | 62-1/2 | 22-1/2                  | 21             | 1                   | 63                    | 6           | 27-3/4        | 830                      | 880                       |
| BCG3-85T390-6NOX              | 85        | 390,000           | 935            | 374   | 267   | 73 | 4-1/2              | 72     | 62-1/2 | 22-1/2                  | 21             | 1                   | 63                    | 6           | 27-3/4        | 830                      | 880                       |

ASME models are prefixed with an "A" (ABCG3-70T120-5NOX). Low NOx models are not available in Propane.  
 +BCG3-70T120-5NOX is approved for 5" vent using 6x5 reducer.  
 All top inlets and outlets are 1-1/2". All rear inlets and outlets are 1-1/2" except the 100T200, 100T250, 100T275, which are 2"  
 All dimensions in inches.  
 Dimensions and specifications subject to change without notice in accordance with our policy of continuous product improvement.  
 \* Models rated at 82% thermal efficiency.  
 BCG3-95T199-6NOX models are available for sale in California only.

Installation diagrams available in our Commercial Water Heater Plumbing Guide

Water Heater(s) shall be Model \_\_\_\_\_ as manufactured by American®, or equal. Water heater(s) shall be of glasslined design, and gasfired, equipped to burn \_\_\_\_\_ gas and design certified by the Underwriter Laboratory under ANSI Z21.103 - CSA 4.3 for commercial heaters for delivery of 180°F water, and meet the thermal efficiency and standby loss requirements of the U. S. Department of Energy and current edition of ASHRAE/IESNA 90.1 Heaters shall have an input rating of \_\_\_\_\_ and a recovery rating of \_\_\_\_\_ GPH at a temperature rise of 100°F with a storage capacity of \_\_\_\_\_ gallons. Heaters shall be equipped with 1-1/2" water inlet and outlet openings (BCG3-NOx 200, 250, 275, 310 rear openings are 2"), a 2-3/4" x 3-3/4" boiler-type handhole cleanout and shall have a maximum working pressure of 160 psi. Water heater(s) shall be equipped with an integrated control system consisting of a 180°F adjustable thermostat with upper and lower sensing bulbs, which average the water temperatures at the top and bottom of the tank for maximum water temperature control. Heater(s) shall be provided with a manual reset gas shutoff device, a gas pressure regulator set for the type of gas supplied, coated steel burners, an approved draft diverter, anodes for cathodic protection, flue damper and IID system. A CSA certified and ASME rated T&P relief valve shall be furnished and installed by the factory. The heater shall be insulated with Non-CFC foam insulation or equal. The outer jacket shall have a baked enamel finish over a bonderized undercoating. All internal surfaces of the heater(s) exposed to water shall be glasslined with an alkaline borosilicate composition that has been fused-to-steel by firing at a temperature range of 1400° to 1600°F. Heater tank shall have a 3-year limited warranty against corrosion or sediment buildup as outlined in the written warranty. Fully illustrated instruction manual to be included.

## Distributed By:

### Order Entry and Sales

500 Princeton Road (FEDEX, UPS)  
 Johnson City, TN 37601-2030  
 P.O. Box 4808 (Mailing)  
 Johnson City, TN 37602-4808  
 (800) 937-1037  
 FAX (800) 581-7224

### Warranty and Service

500 Princeton Road (FEDEX, UPS)  
 Johnson City, TN 37601-2030  
 P.O. Box 1597 (Mailing)  
 Johnson City, TN 37605-1597  
 (800) 456-9805  
 FAX (800) 999-5210