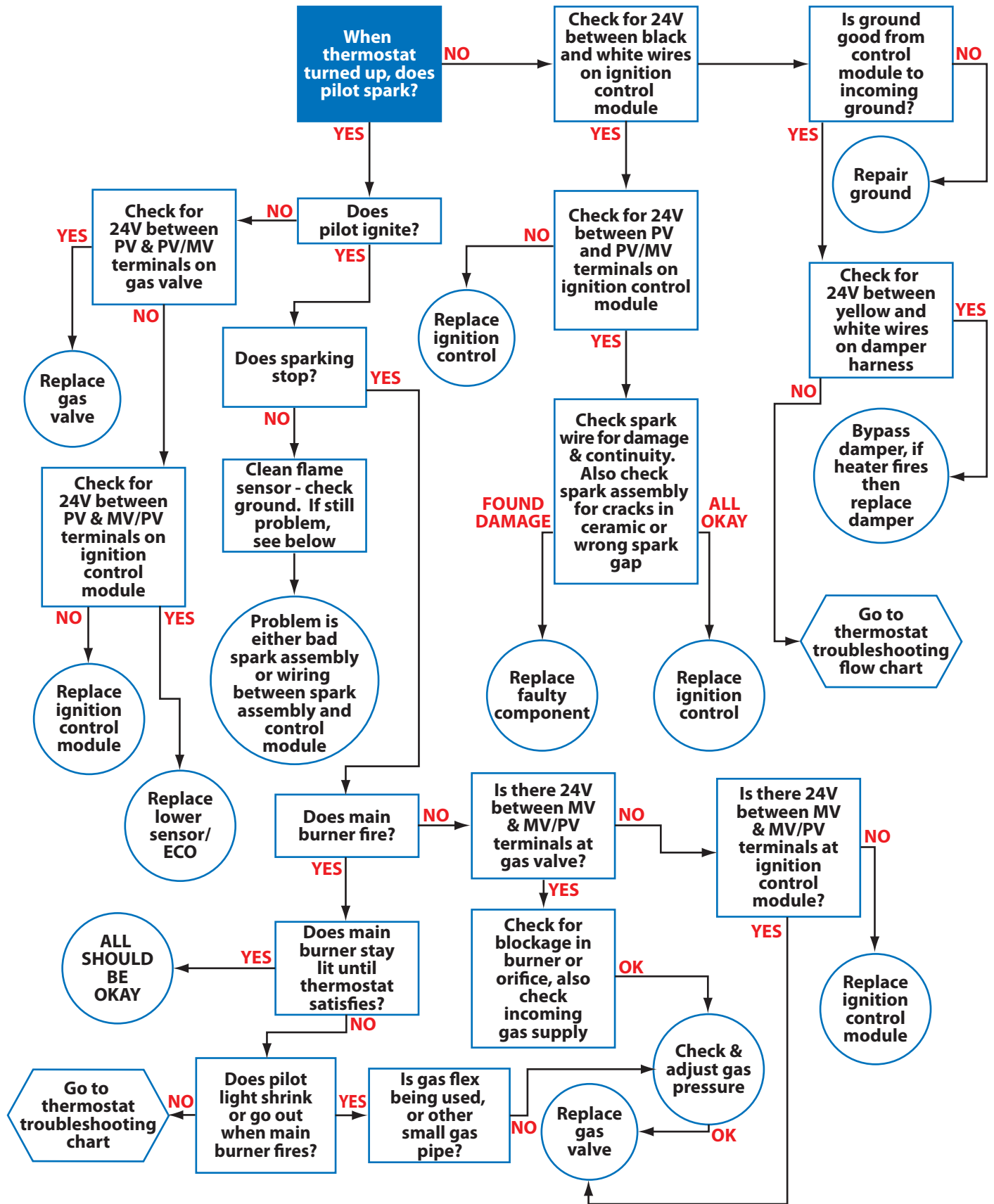
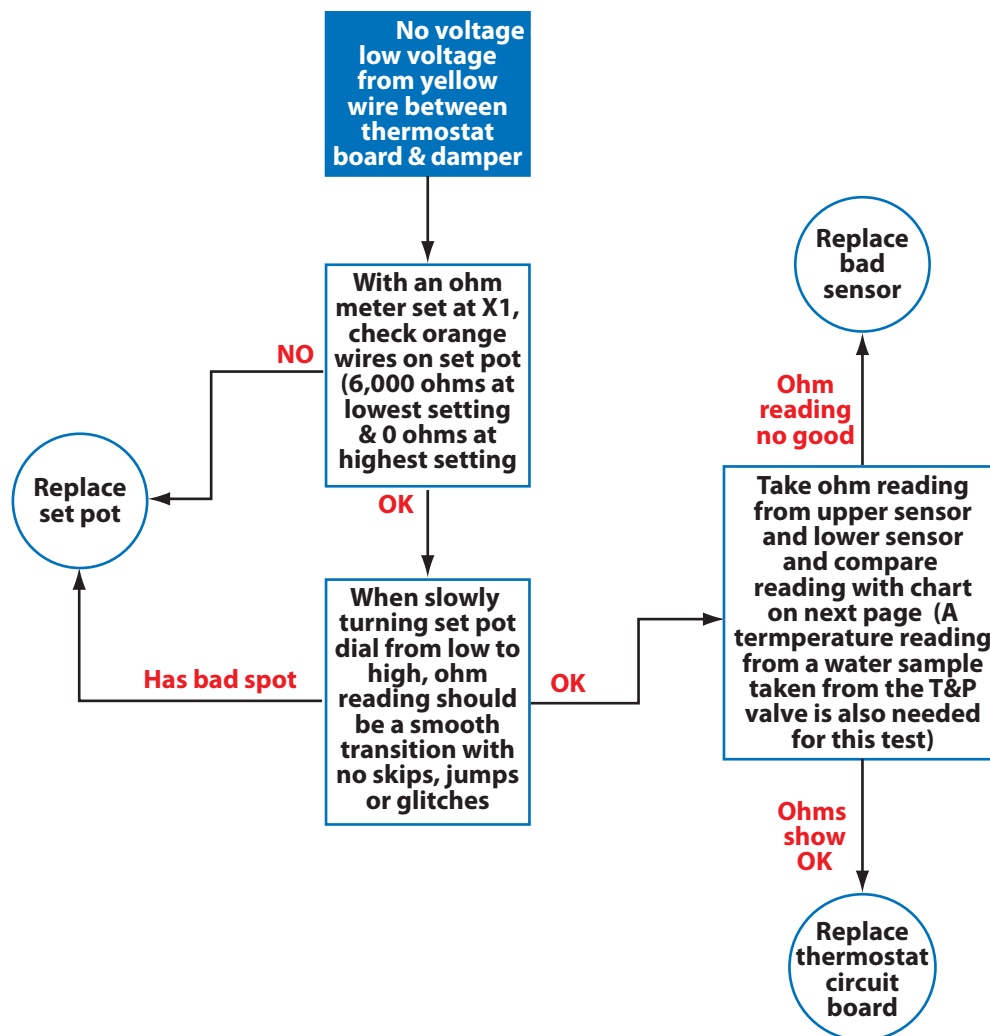


# DCG31 & DCG32 SERIES COMMERCIAL GAS DAMPERED WATER HEATERS



# DCG31 & DCG32 SERIES COMMERCIAL GAS DAMPERED WATER HEATER THERMOSTAT



## Sequence of Operation:

When thermostat contacts close on a call for heat, a 24 Volt signal is sent to the damper and cause it to open. When the damper proves fully open, the 24 Volt signal continues to the ignition control module will then start sparking at the pilot head while at the same time sending 24 volts to the pilot valve portion of the gas valve to open it and allow the main burner to light. The main burner will continue to fire until the thermostat system is satisfied and opens the thermostat contacts, causing the damper to close and the ignition control module to shut down.