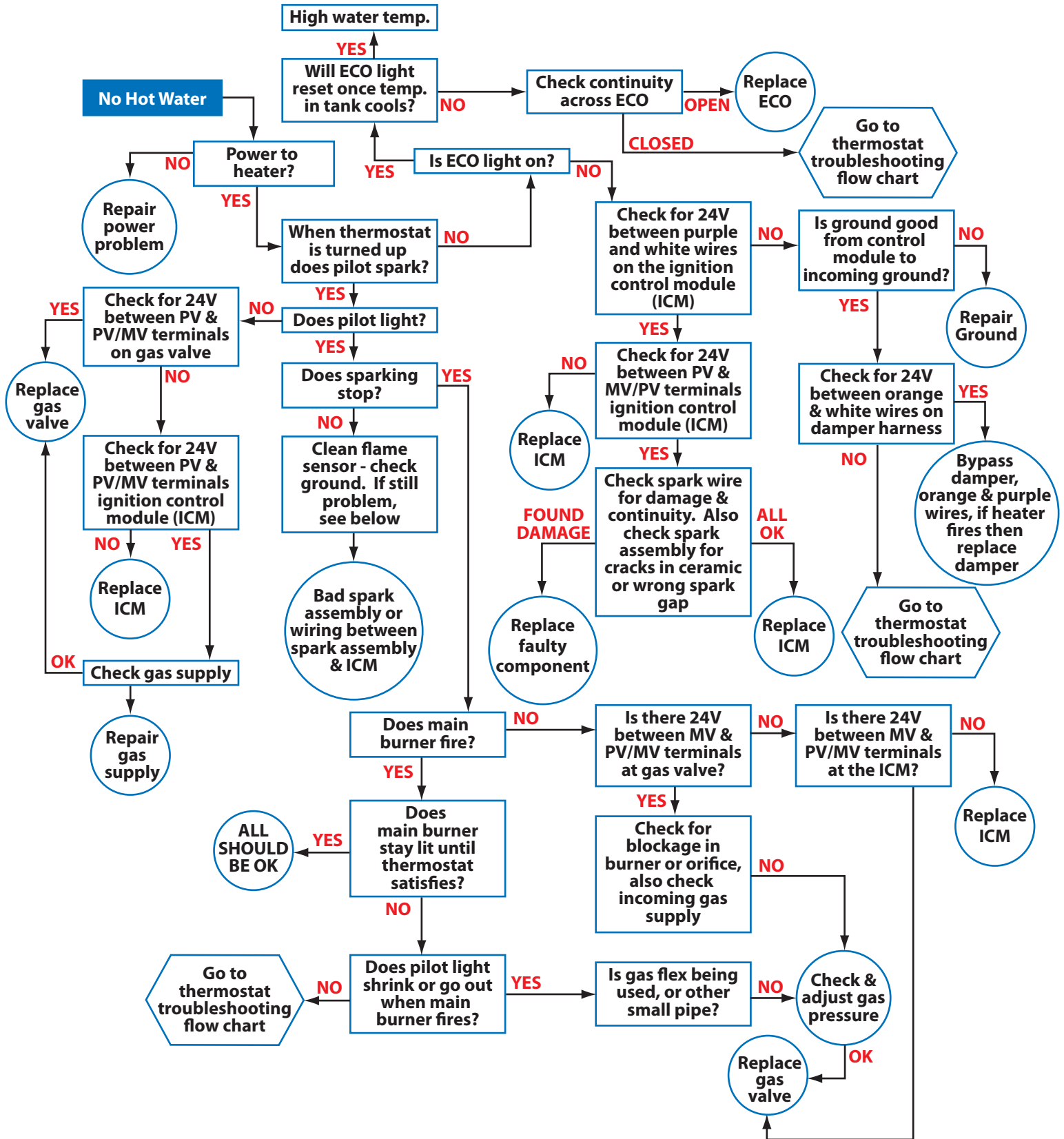
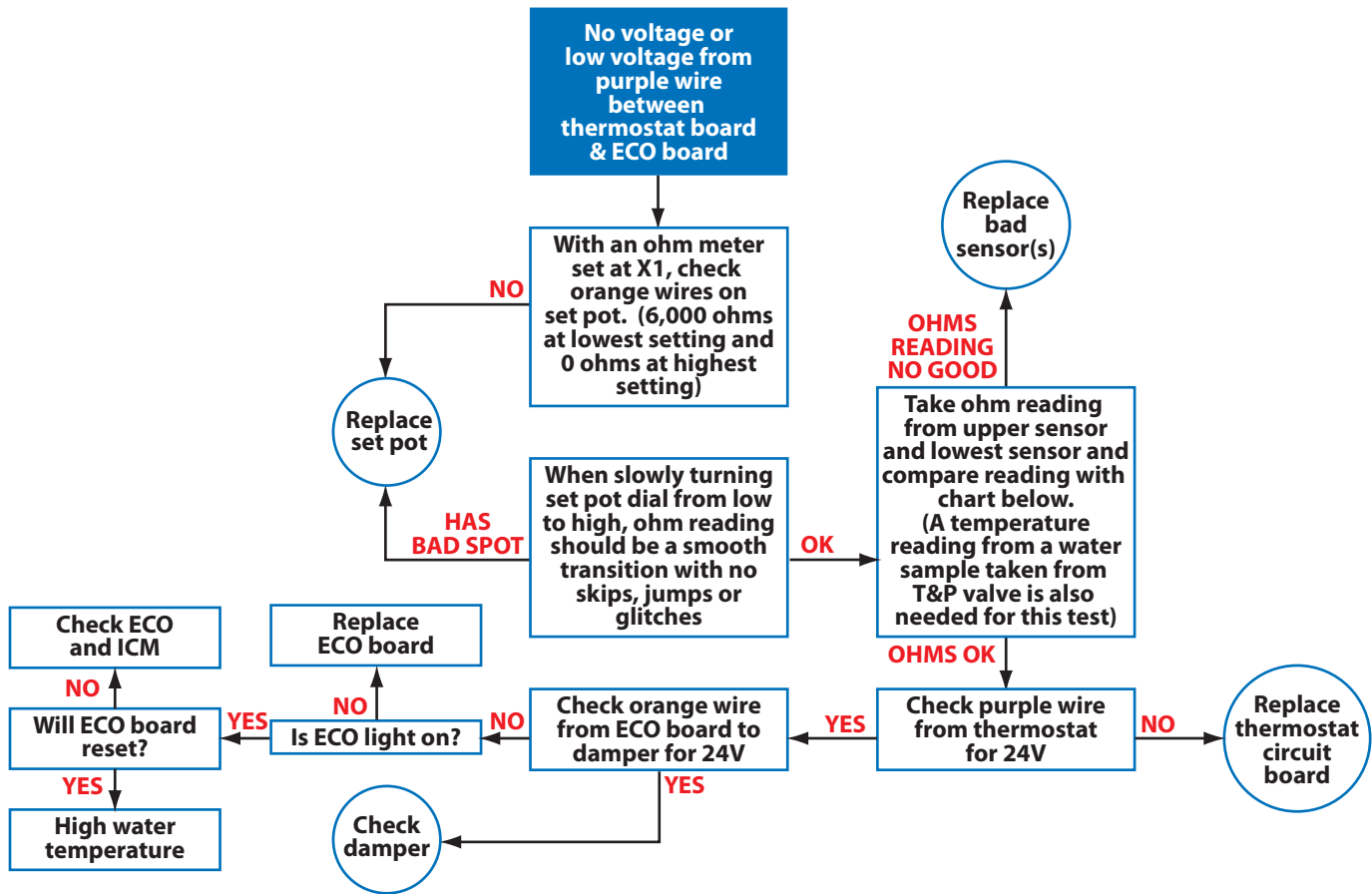


DCG3 SERIES COMMERCIAL GAS DAMPERED WATER HEATERS



DCG3 SERIES THERMOSTAT TROUBLESHOOTING FLOW CHART



Sensor Resistance vs. Temperature										
Temp.	Resistance (K ohms)									
	0	1	2	3	4	5	6	7	8	9
0°C	32648	31026	29495	28049	26682	25389	24166	23010	21915	20879
10°C	19898	18968	18088	17253	16461	15710	14998	14322	13680	13071
20°C	12492	11942	11419	10922	10450	10000	9572	9165	8778	8409
30°C	8057	7722	7403	7099	6808	6532	6268	6016	5775	5546
40°C	5327	5117	4917	4726	4543	4368	4201	4042	3889	3742
50°C	3602	3468	3340	3217	3099	2986	2878	2774	2675	2579
60°C	2488	2400	2316	2235	2157	2083	2011	1942	1876	1813
70°C	1752	1693	1637	1582	1530	1480	1432	1385	1340	1297
80°C	1256	1216	1177	1140	1105	1070	1037	1005	974	944
90°C	916	888	861	835	810	786	763	741	719	698
40°F	26109	25400	24712	24045	23399	22771	22163	21573	21000	20445
50°F	19906	19383	18876	18383	17905	17440	16990	16553	16128	15715
60°F	14884	14422	13976	13546	13131	12730	12343	11969	11608	11260
70°F	11884	11592	11308	11032	10763	10502	10248	10000	9760	9526
80°F	8884	8656	8436	8224	8019	7820	7627	7440	7258	7081
90°F	7333	7165	7000	6839	6683	6531	6383	6238	6098	5961
100°F	5827	5697	5570	5446	5326	5208	5094	4982	4873	4767
110°F	4758	4649	4542	4437	4334	4233	4134	4037	3942	3849
120°F	3758	3679	3602	3527	3453	3382	3312	3244	3177	3112
130°F	3088	3029	2972	2917	2864	2812	2761	2711	2662	2614
140°F	2488	2439	2391	2344	2298	2253	2209	2166	2124	2083
150°F	2088	2049	2011	1974	1938	1903	1869	1836	1803	1771
160°F	1688	1656	1625	1595	1566	1537	1509	1481	1454	1427
170°F	1388	1361	1335	1309	1284	1260	1236	1213	1190	1167
180°F	1170	1150	1129	1110	1090	1071	1053	1035	1017	999
190°F	982	965	949	933	917	901	886	871	857	842
200°F	828	814	801	788	775	762	749	737	725	713