

## PROLINE® DIRECT VENT COMMERCIAL-GRADE RESIDENTIAL

### DIRECT VENT DESIGN

- One-pipe, dual-channel closed system draws all make-up air from outside the home, eliminating problems caused by insufficient indoor ventilation and is FVIR compliant. Horizontal air intake and venting on all models up to 80 inches from outside wall with no electrical power needed.

### INTELLIGENT CONTROL LOGIC

- The internal microprocessor provides enhanced operating parameters and tighter differentials for precise sensing and faster heating response to optimize performance.
- Uses a thermopile to generate the power needed to operate the electronic gas control without requiring an external power source.
- The electronic gas control incorporates an LED status indicator that monitors system operation and service diagnostics.

### GREEN CHOICE® GAS BURNER

- Patented eco-friendly burner design reduces NOx emissions up to 33% and complies with Low-NOx emission requirements of less than 40 ng/J.

### SELF-CLEANING DIP TUBE

- Helps reduce lime and sediment buildup and maximizes hot water output. Made from long-lasting PEX cross-linked polymer.

### COREGARD™ ANODE ROD

- Our anode rods have a stainless steel core that extends the life of the anode rod allowing superior tank protection far longer than standard anode rods.

### PUSH BUTTON PIEZO IGNITOR

- Makes lighting pilot fast and easy with one-hand push-button spark ignition.

### HEAT TRAP NIPPLES

- Factory-installed for faster installation.

### ENHANCED-FLOW BRASS DRAIN VALVE

- Our residential water heaters have a solid brass, tamper resistant, enhanced-flow, ball type, drain valve.
- Uses a standard female hose fitting that allows for fast and easy draining during maintenance.
- Designed for easy operation, this valve includes an integral screwdriver slot that features a ¼ turn (open/close) radius, which not only permits full straight-through water flow but also a quick and positive shut off.

### CSA CERTIFIED AND ASME RATED T&P RELIEF VALVE

### CODE COMPLIANCE

- Meets UBC, CEC and HUD National Codes.
- Meets the thermal efficiency and standby loss requirements of the U.S. Department of Energy and current edition of ASHRAE/IES 90.1
- Complies with the Federal Energy Conservation Standards effective April 16, 2015, in accordance with the Energy Policy and Conservation Act (EPCA), as amended.

### 6-YEAR LIMITED TANK AND PARTS WARRANTY

- For complete information, consult written warranty or go to [americanwaterheater.com](http://americanwaterheater.com).



Model Number	Series	Gallon Capacity	First Hour Rating Gallon	Energy Factor	BTU Input Per Hour	Recovery 90° Rise Gallon Per Hour	Dimensions in Inches								Vent Outlet	Approx. Shipping Weight (lbs)
							A	B	C	D	E	F	*G	H		
DVG62-40S38-NOV	300	40	72	0.63	38,000	41	64	49-3/4	22	13-1/4	15-1/4	42-1/2	29	15-1/4	Co-Axial	178
DVG62-50T40-NOV	300	50	91	0.62	40,000	43	73	59	22	13-1/4	15-1/4	51-3/4	29	15-1/4	Co-Axial	200
DVG62-50T47-NOV	300	50	92	0.61	47,000	51	74	60	22	13-1/4	15-1/4	52-3/4	29	15-1/4	Co-Axial	215

Dual-channel system has 3" vent pipe inside 6" air intake pipe, for the 40 and 50-gallon models.

\*Allow 29" for front to back dimension for air intake at rear of heater.

All models have 2" foam cavity.

Water connection is 3/4" male on 8" center.

All models are available in propane (LP) gas (series 301).

All models are certified from sea level to 7,700 ft. elevation.

All models are available with side loop fittings. Add "L" to the suffix of the model number (example: 40S38-NOLV).

Dimensions and specifications subject to change in accordance with our policy of continuous product improvement.

## IMPORTANT! VENT INSTALLATION AND TERMINATION REQUIREMENTS

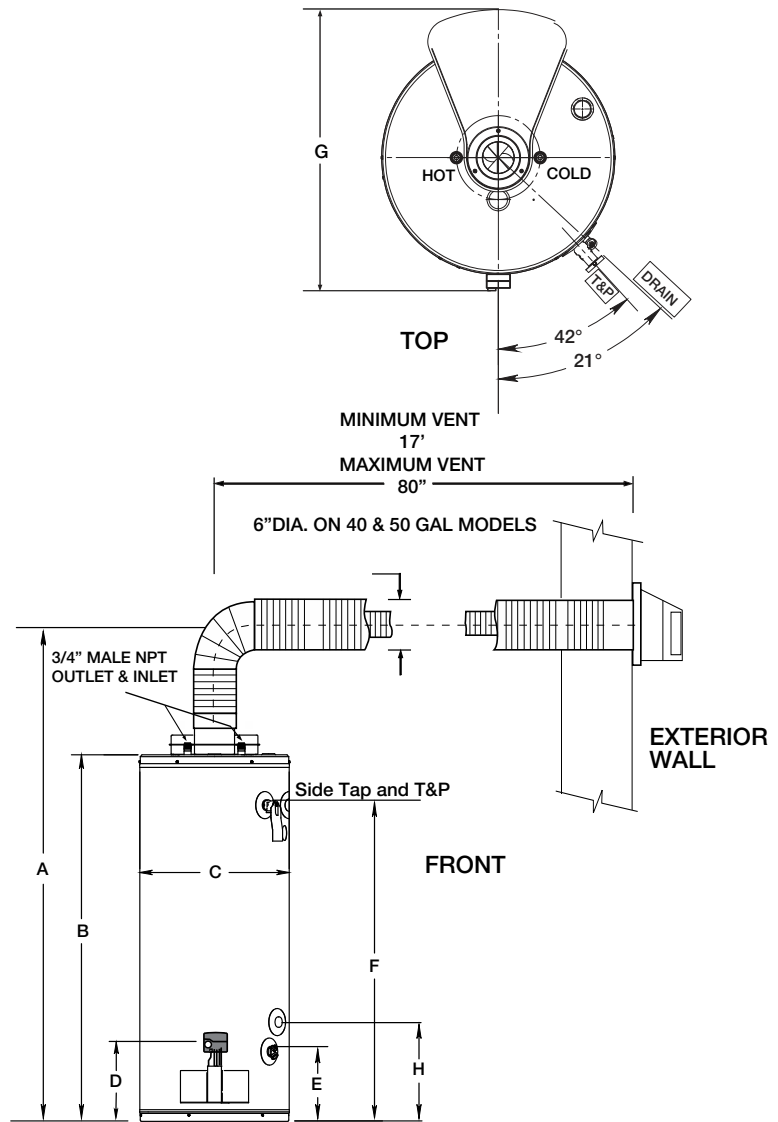
- Maximum horizontal vent distance is 80" to the outside of exterior wall.
- Maximum vertical vent distance is 72" above heater before 90 degree turn through exterior wall.
- Minimum horizontal vent distance is 17" to outside of exterior wall.
- Vent pipes may be trimmed (cut) for short vent installations.
- The recommended installation height for the vent termination is dimension "A" in the above table. The minimum allowable height (center line of termination opening) is 60 3/4" for the 40-gallon model, 69 1/2" for the 50-gallon 40,000 BTU input model, 70 1/2" for the 50-gallon model, 47,000 BTU input model.

### VENT RESTRICTOR PLATE:

- The vent restrictor plate is required for short horizontal vent runs less than 30" horizontal and vent runs when the termination's height is greater than 48" above the heater. The only time the restrictor is not required is for horizontal runs greater than 30" in length with the termination less (lower) than 48" above the heater. See installation instructions for complete details.

### OFFSET VENT ARRANGEMENT:

- The vent run may have one (1) 90 degree horizontal turn prior to terminating through the exterior wall. See installation instructions for complete details.
- Vent termination clearance hole through the exterior wall should be approximately 7" diameter.
- Snow accumulation and drifting should be considered when locating the termination.
- An optional wire grill vent cap protector is available through the parts department. (Part number 9006627005).
- See the installation manual for complete installation and venting requirements.



For technical information call (800) 999-9515. American Water Heaters reserves the right to make product changes or improvements without prior notice.