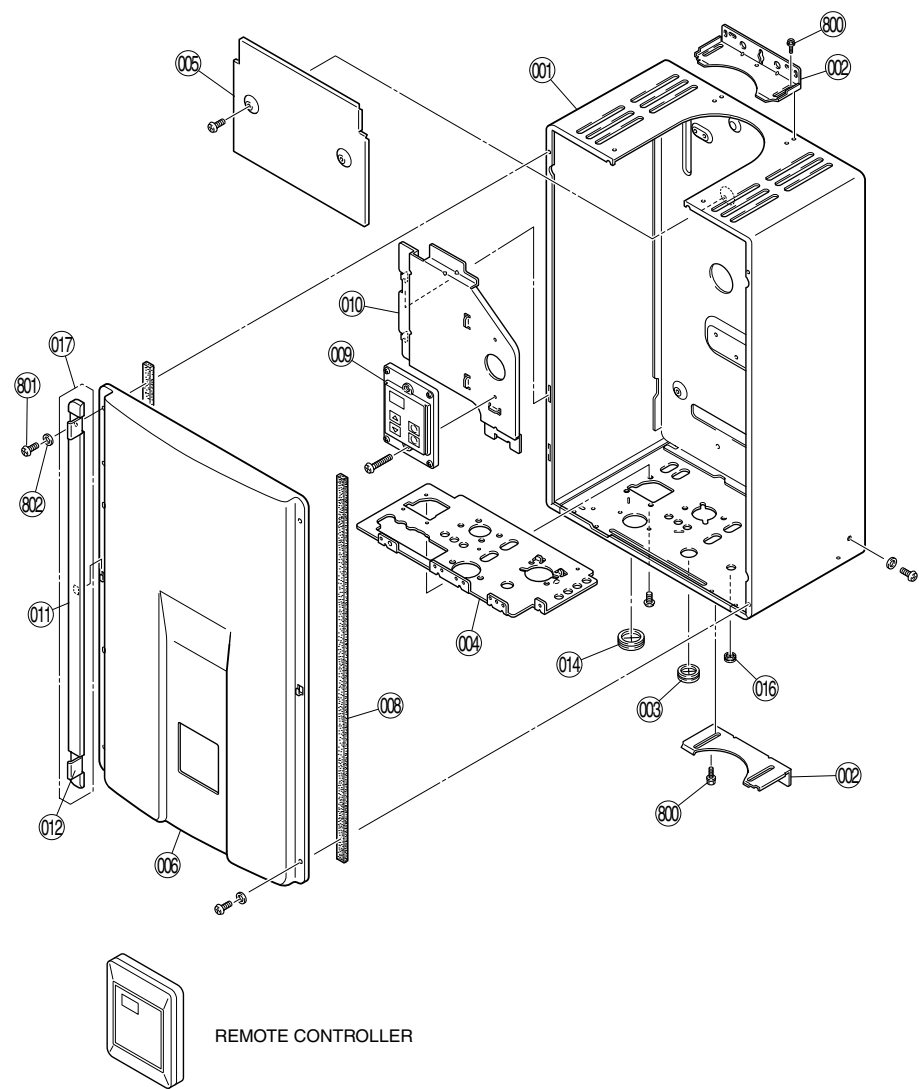
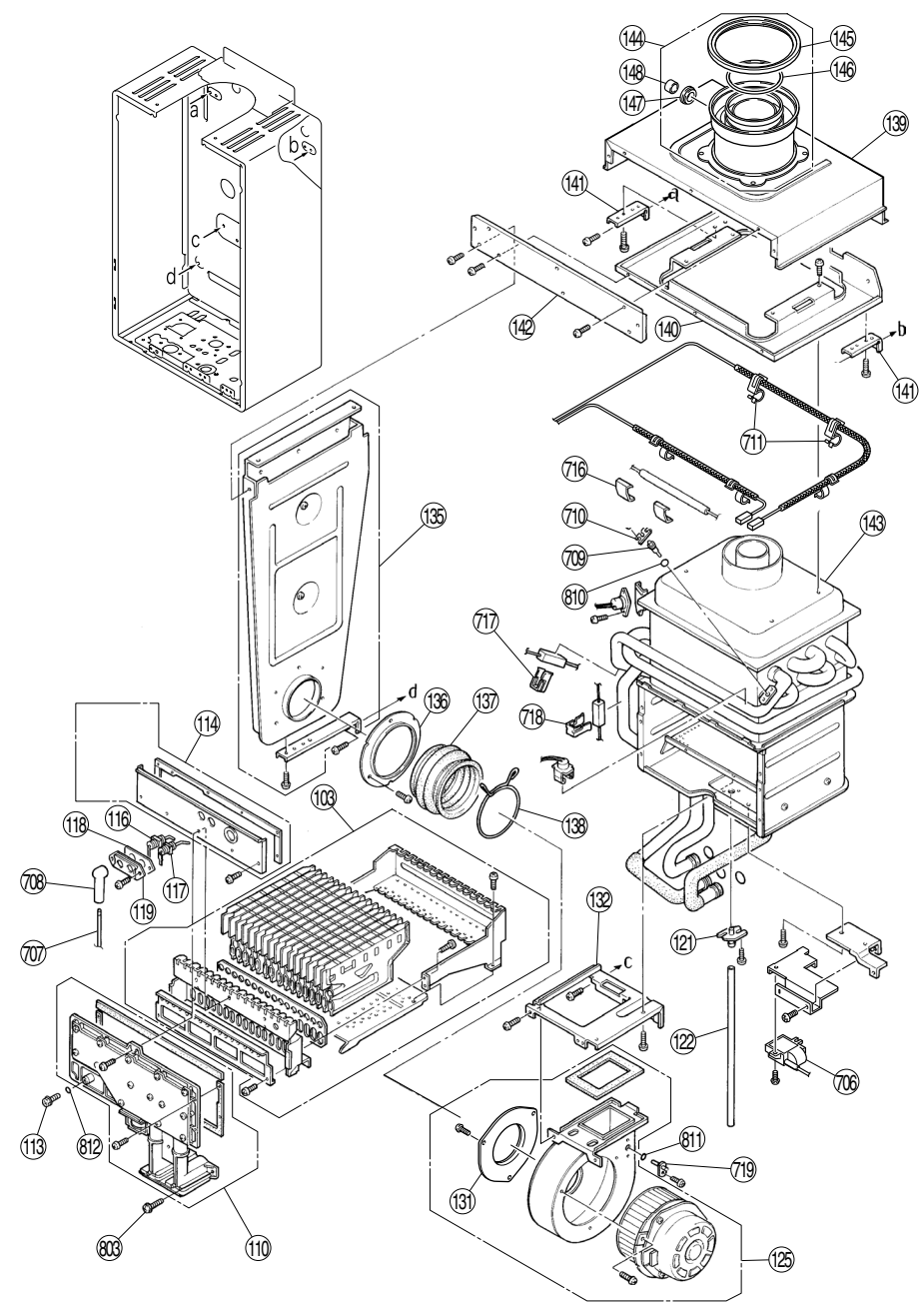


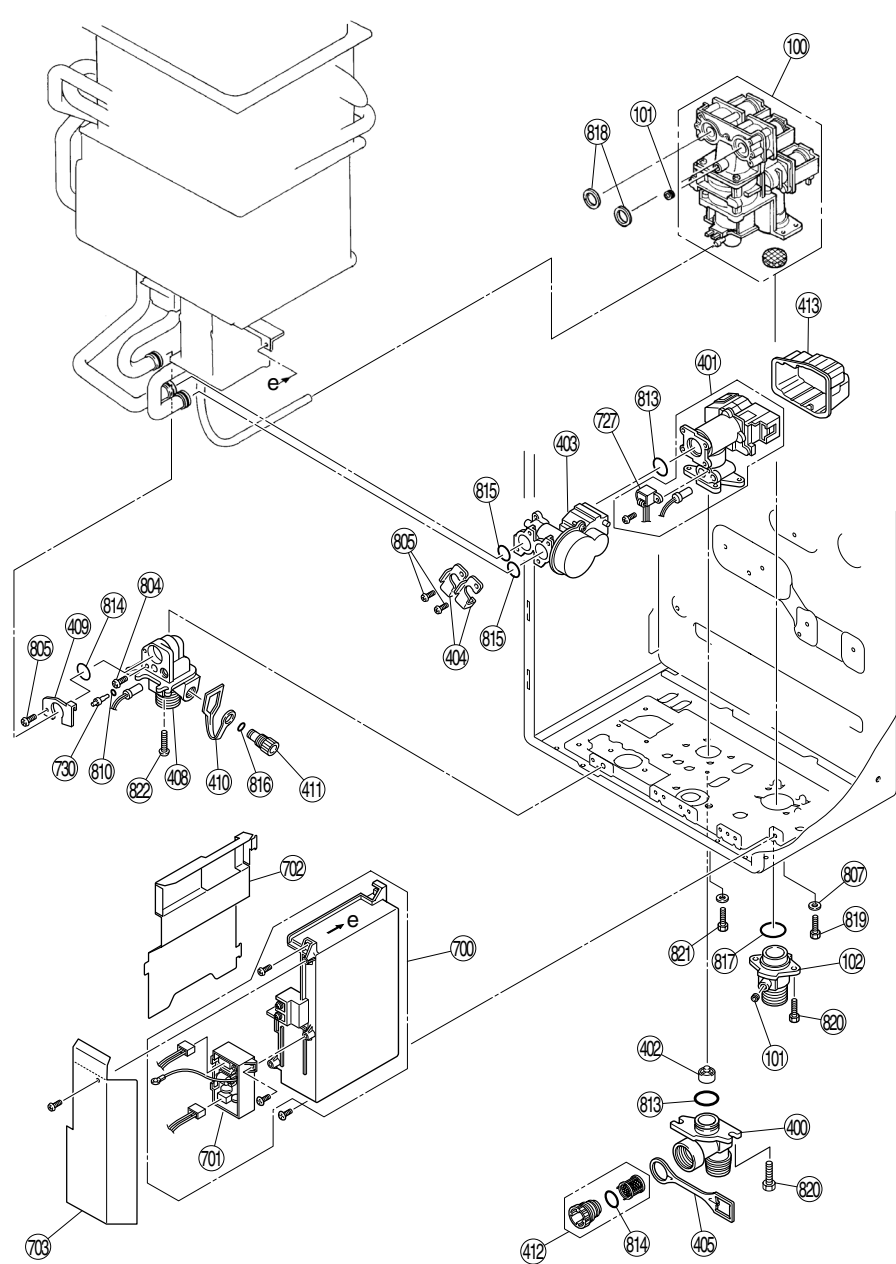
EXPLODED VIEW - CABINET



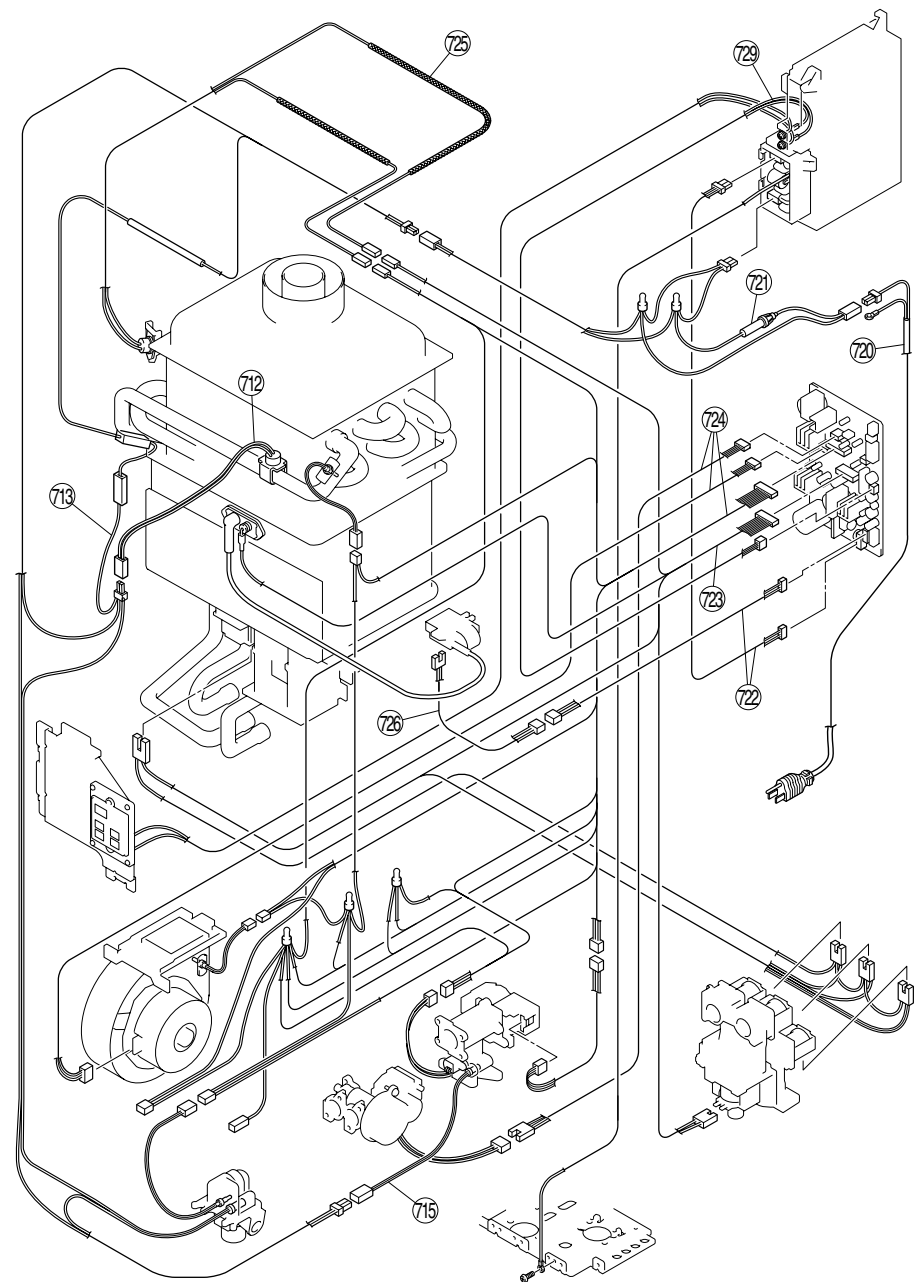
EXPLODED VIEW - INTERNALS



EXPLODED VIEW - INTERNALS



EXPLODED VIEW - ELECTRICAL



PARTS LIST

Number	Description	Parts Number	Quantity		Number	Description	Parts Number	Quantity		Number	Description	Parts Number	Quantity	
			505	305				505	305				505	305
001	Main Body (FFU)	701022-004	1	1	140	Air Inlet Box Frame	701022-056	1	1	713	Anti Frost Heater (120V)	701022-098	1	1
002	Wall Mounting Bracket (FFU)	701022-006	2	2	141	Joint Exhaust Tube Frame Supporter	701022-057	2	2	715	Valve Heater (120V) Assembly	701022-100	1	1
003	Rubber Bushing	701022-008	1	1	142	Air Inlet Box Cover	701022-058	1	1	716	Antifrost Heater Clip B	701022-102	2	2
004	Connection Reinforcement Panel	701022-009	1	1	143	Heat Exchanger Assembly	701022-059	1	-	717	Antifrost Heater Clip A	701022-103	1	1
005	Heat Protection Plate	701022-010	1	1	143	Heat Exchanger Assembly	701022-060	-	1	718	Antifrost Heater Clip C	701022-105	1	1
006	Front Panel	701022-011	1	1	144	Flue Connection Assembly	701022-063	1	1	719	Inlet Air Thermistor	701022-106	1	1
008	Front Panel Packing Side	701022-014	2	2	144	Flue Connection Assy - Male (optional)	701022-064	1	1	720	Power Cord	701022-107	1	1
009	Controller Ass'y	701022-015	1	1	145	O-ring	701022-065	1	1	721	Fuse Harness (FF)	701022-108	1	1
010	Controller Bracket	701022-016	1	1	146	O-ring	701022-066	1	1	722	Power Harness	701022-110	1	1
011	Screw Cover	701022-017	2	2	147	Pipe Seal	701022-067	1	1	723	Solenoid Valve Harness	701022-111	1	1
012	Screw Cover Lid	701022-018	4	4	148	Cap	701022-068	1	1	724	Sensor Harness	701022-112	1	-
014	Rubber Bushing	701022-020	1	1	400	Water Inlet (3/4" NPT)	701022-069	1	1	724	Sensor Harness	701022-113	-	1
016	Packing	701022-023	1	1	401	Water Flow Servo & Sensor Assembly	701022-071	1	-	725	Thermal Fuse Harness Assy	701022-116	1	1
017	Screw Cover Assy	701022-024	2	2	401	Water Flow Servo & Sensor Assembly	701022-072	-	1	726	Ignitor Harness	701022-117	1	1
100	Gas Control Assembly	701022-025	1	1	402	Rectifier	701022-073	1	1	727	Flow Sensor	701022-118	1	1
101	Test Port Set Screw	701022-026	2	2	403	By-pass Servo Assembly	701022-074	1	-	729	Remote Controller Harness	701022-119	1	1
102	Gas Connection (3/4" NPT)	701022-027	1	1	404	Stop Bracket	701022-075	2	-	730	Thermistor	701022-120	1	1
103	Burner Unit Assy (LPG)	701022-028	1	1	404	Stop Bracket	701022-076	-	1	800	Screw	701022-121	8	8
103	Burner Unit Assy (NG)	701022-029	1	1	405	Plug Band	701022-077	1	1	801	Screw	701022-122	4	4
110	Manifold Assembly (LPG)	701022-031	1	1	408	Hot Water Outlet (3/4" NPT)	701022-078	1	1	802	Resin Washer	701022-123	4	4
110	Manifold Assembly (FF-NG)	701022-032	1	1	409	Stop Bracket	701022-079	1	1	803	O-ring	701022-124	3	3
113	Pressure Point Sealing Screw	701022-034	1	1	410	Plug Band (small)	701022-080	1	1	804	Thermistor Stop Screw	701022-125	1	1
114	Combustion Chamber Sightglass Plate	701022-035	1	1	411	Drain Valve	701022-081	1	1	805	Screw	701022-126	3	2
116	Electrode	701022-036	1	1	412	Water Filter Assy	701022-082	1	1	810	O-ring	701022-130	2	2
117	Flame Rod	701022-037	1	1	413	Cover	701022-083	1	1	811	O-ring	701022-131	1	1
118	Electrode Packing	701022-038	1	1	700	PCB	701022-281	1	-	812	O-ring	701022-132	1	1
119	Electrode Holder	701022-039	1	1	700	PCB	701022-280	-	1	813	O-ring	701022-133	2	1
121	Tube Joint	701022-041	1	1	701	Surge Protector	701022-086	1	1	814	O-ring	701022-134	2	2
122	Vent Tube	701022-042	1	1	701	Surge Protector with terminal (optional)	701022-087	1	1	815	O-ring	701022-135	2	1
125	Fan Assembly	701022-043	1	1	702	PCB cover - side	701022-088	1	1	816	O-ring	701022-136	1	1
131	Rubber Boot Bracket Right	701022-046	1	1	703	PCB cover - front	701022-090	1	1	817	O-ring	701022-137	1	1
132	Combustion Chamber Fan Bracket	701022-047	1	1	706	Ignitor	701022-091	1	1	818	Packing	701022-138	2	2
135	Air Inlet Box All Assembly	701022-048	1	1	707	High Tension Cord	701022-092	1	1	819	Screw	701022-139	2	2
136	Rubber Boot Bracket Left	701022-050	1	1	708	Electrode Sleeve	701022-093	1	1	820	Screw	701022-140	4	4
137	Rubber Boot	701022-051	1	1	709	Thermistor - Heat Exchanger	701022-094	1	1	821	Screw	701022-141	2	2
138	Rubber Boot Clamping Ring	701022-053	1	1	710	Thermistor Clip Large	701022-095	1	1	822	Screw	701022-142	3	3
139	Air Inlet Duct	701022-055	1	1	711	Temperature Fuse Clip	701022-096	5	5	888	Manual	315897-000	1	1
					712	Frost Sensing Switch	701022-097	1	1	889	Tech Sheet	315895-000	1	1